

Linear Kit 1

Simple aluminium graphic frame ideal for looped fabric graphics. Linear kit 1 is ideal for all types of promotion, exhibition or semi-permanent display.



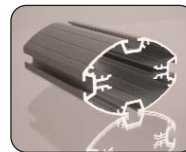
features & benefits

- Overall assembled size 2000mm (h) x 1220mm (w) x 400mm (d) approx
- Anodised aluminium construction
- Portable, easy assembly
- Available with round or oval profile post options
- Steel oval bases supplied as standard
- 450mm dia steel dome or thermoformed MDF base options also available
- Looped fabric graphic fixing is recommended

Post options



75mm round



75mm oval

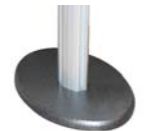
Base options



Steel oval
supplied as std
(weight 2kg approx)



450mm dia Steel dome
extra cost option
(weight 7.5kg approx)



Thermoformed MDF
extra cost option
(weight 0.5kg approx)

Recommended
carry bag: LPB

Recommended
carry bag: LPB1

Graphic fixing



Double hemmed looped
fabric graphic fixing is
recommended



hardware & graphic specifications

Hardware dimensions (mm):
2000 (h) x 1220 (w) x 400 (d)
approx

Weight:
10kg approx
(based upon Steel oval bases)

Looped fabric:

Visible graphic dimensions (mm):
2000 (h) x 1000 (w) approx
including a 160mm double
hemmed loop at top and
bottom of graphic.

Recommended graphic substrate:
105 to 205gsm Lightweight
fabric

Rigid infill:

5mm thick foam board graphics
may also be used with kit 1.

Graphic dimensions (mm):

Rigid infill (1 panel)

1935 (h) x 1012 (w) actual
1920 (h) x 1000 (w) visible

additional info

Recommended accessories:



LN112
Literature holder



LN111
LCD Bracket



AC504
Wheeled carry case



PS1000
200watt light
(see over for
fixing method)

Assembly Instructions

Linear Kit 1 includes:



Steel oval base & M10 bolt x 2
(weight 4kg approx)



Female post x 2
(weight 2.5kg approx)



Male post x 2
(weight 2.5kg approx)



1000mm wide graphic rail x 2
(weight 1kg approx)



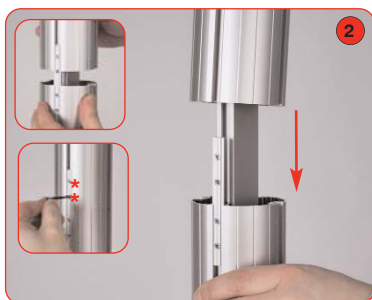
Allen key set



PVC clear washer x 2



Slide graphic loop onto top graphic rail. Secure rail to post by tightening the lock using a 5mm allen key. Repeat step for 2nd post.



Align and slide female post over male post, tighten both grub screws using a 2mm allen key. Repeat step for 2nd post.



Optional PS1000 lights (not supplied with the kit) can be fitted to the graphics rail using the LNB lighting bracket.



Slide graphic loop onto bottom graphic rail. Secure rail to post by tightening the lock using a 5mm allen key. Repeat step for 2nd post.



Attach base to male post using M10 bolt and allen key. Ensure clear washer is between base & post. Repeat step for 2nd post.