

A versatile cantilever literature stand, collapsible for easy transportation. Ideal for exhibition displays.

Features & benefits

- One step easy cantilever assembly action
- A4 portrait format
- 4 pockets
- Available in black or silver powdercoated finishes
- Carry bag included



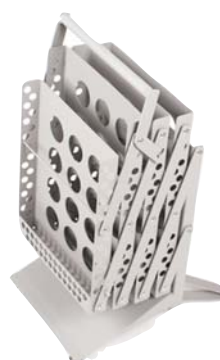
Integral carry handle for easy transportation



Handle fits through top of carry bag



Adjustable feet



hardware specifications

Assembled dimensions (mm):
1535 (h) x 370 (w) x 300 (d) approx.
60.4"(h) x 14.6" (w) x 11.8" approx

Closed dimensions (mm):
495 (h) x 260 (w) x 230 (d) approx.
19.5" (h) x 10.2" (w) x 9.1" (d) approx.

Weight:
7kg (15.4lbs) approx (including carry bag)

pocket specifications

Pocket dimensions (mm):
302 (h) x 240(w) x 22 (d)
11.9" (h) x 9.5" (w) x 0.9" (d)

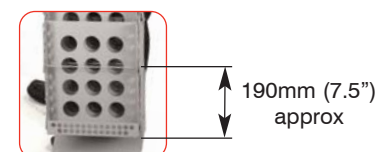
Max document dimensions (mm):
305 (h) x 232 (w)
12.0" (h) x 9.1" (w)

Illusion is suitable for A4 literature

additional info

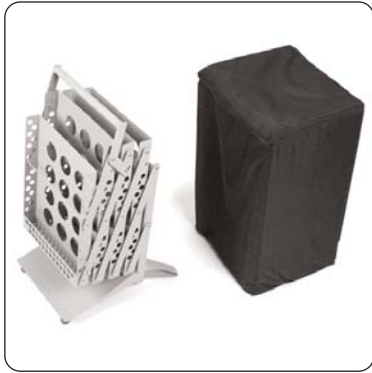
Availability:
Black or silver powdercoated finish

Bar position on tray:



Assembly Instructions

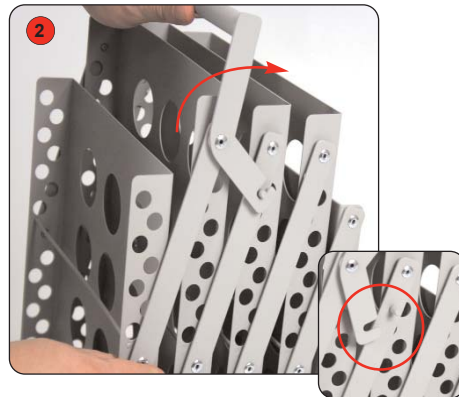
Important: Ensure fingers are kept clear of folding mechanism when opening and closing the unit



Kit Includes: Illusion and carry bag



Open out both rear stabilising feet.



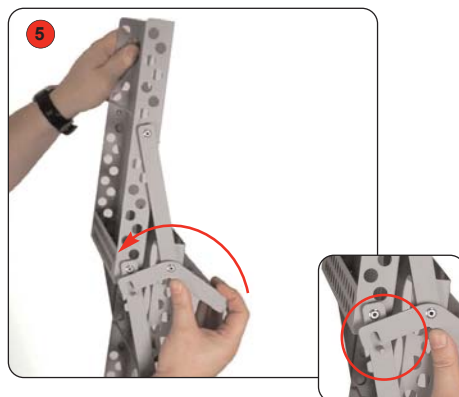
Push handle backwards to release the locking arm (handle).



Hold the top pocket, place foot on base and lift unit gently forward and upwards.



Continue to lift unit into the upright position.



Once unit is fully extended, push the locking arm forwards and secure into place by slotting the hook over the locator pip.



If required rotate the stabilising feet to the desired height.