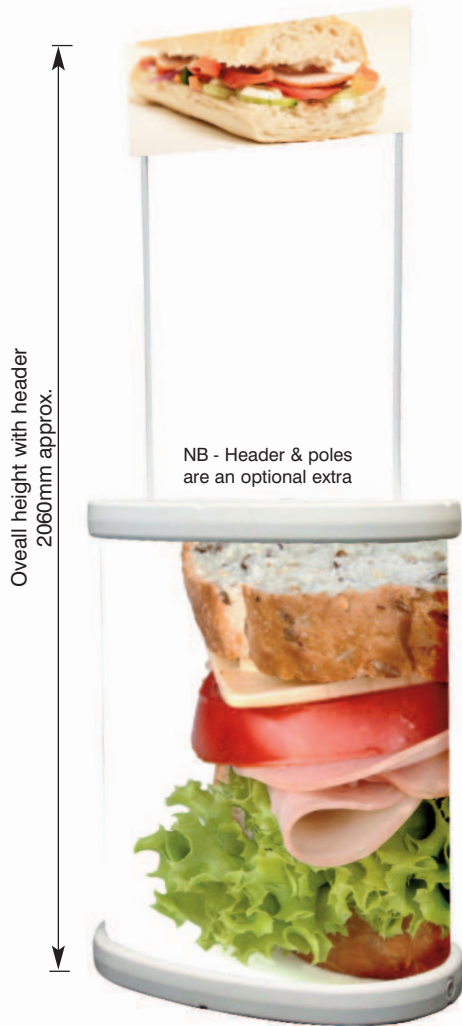


The Tornado is an ideal counter for outdoor promotional use, with a hollow moulded top and base making it very light and easy to transport. The top includes a pen recess and water drainage notches. The base can be filled with water or sand for added weight and stability, making it suitable for all weather conditions.

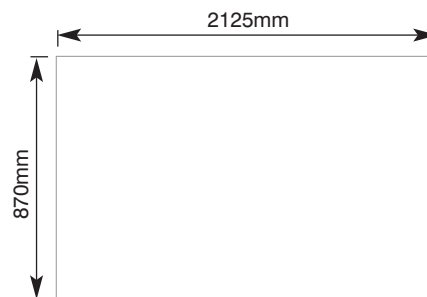


features & benefits

- Suitable for indoor or outdoor use
- Constructed from moulded NDPE and PVC tambour
- Moulded top has a pen recess and water drainage notches
- Weatherproof, robust and durable
- Hollow base for water or sand weighting
- Plain white PVC tambour wrap included
- Header & support poles are an extra cost option



Either Open knee hole or full wrap configurations can be achieved with the same components.



Graphic wrap dimensions



5mm thick foam board recommended

Header graphic infill dimensions

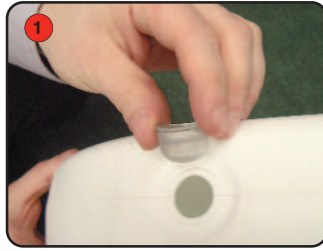
hardware specifications	graphic specifications	additional info
<p>Assembled dimensions (mm) 1040 (h) x 850 (w) x 500 (d) approx.</p> <p>PVC wrap actual dimensions (mm): 900 (h) x 2070 (w) (+/- 5mm)</p> <p>Header assembled dimensions (mm): 250 (h) x 600 (w) approx.</p> <p>Weight: 11.5kg approx</p>	<p>Graphic wrap dimensions (mm): 870 (h) x 2125 (w) approx. (includes a 50mm overlap)</p> <p>Viewable dimensions (mm): (when viewed from front of counter) 870 (h) x 950 (w) approx.</p> <p>Header visible dimensions (mm): 215 (h) x 565 (w) approx. (see above diagram for infill dimensions)</p>	<p>Included in kit: Base, top, 4 x screws, 4 x poles, PVC tambour wrap and carry bag</p> <p>Printing: PVC wrap can be printed directly onto using flat bed printers.</p>

Assembly Instructions

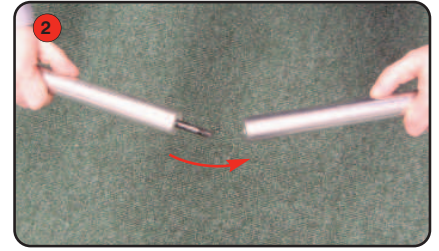
Counter assembly



Kit includes: 4 x poles, 4 x screws, 1 x top, 1 x base, 1 x PVC tambour wrap and carry bag.



1 Take the base with the plug hole and fill with water or sand weighting agent.



2 Screw fasten male pole onto female pole. Repeat for remaining poles.



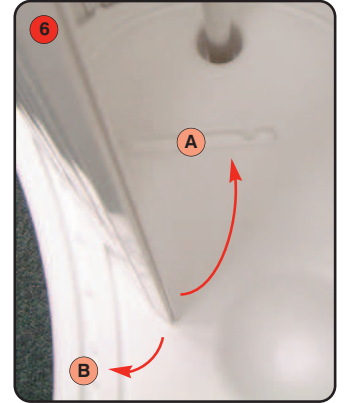
3 Fit pole assembly through hole in the base and push one of the screws through from the opposite side. Ensure the pole and screw are securely fastened together.



4 Repeat step 3 for the other pole and then place the base on the floor.



5 Take the tambour wrap and insert the bottom edge into the grooved guide on the base. Ensure the tambour is fitting securely into the groove.



6 The end of the tambour wrap can slot into groove A for a knee hole open style counter or groove B for full wrap style counter.



Kneehole style counter



Full wrap style counter

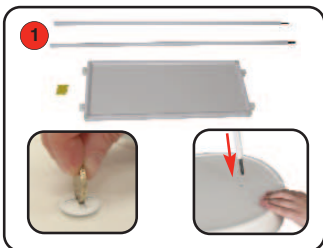


7 Take the top and align the holes over the poles.

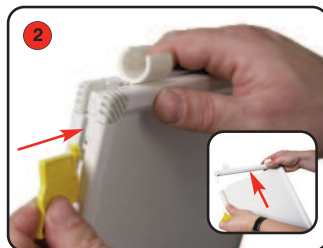


8 Slot the screw through the top into the pole and secure.

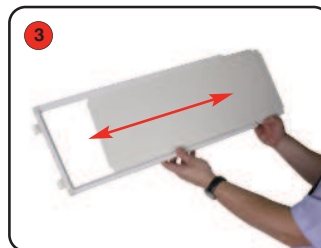
Optional Header Assembly



1 Fasten support poles to the internal poles inside the counter. (If necessary remove top screws first).



2 If using a printed graphic, push in the tab locators and remove one short edge of the header frame.



3 Slide out the supplied board and insert the printed graphic. Refit the short frame edge.



4 Finally, fix header onto support poles using pole clips.