

Reflecta Pro



An unusual and subtle way of creating an eye catching display. The Reflecta Pro lightbox provides a simple and cost effective solution.



features & benefits

- Available in four sizes
- Desktop display or wall mountable
- B2 size is wall mountable only
- Attractively finished in clear acrylic with chrome silver fittings
- LED light source complete with 12V power supply
- Can be positioned in portrait or landscape formats

technical information

- LED light output
- Recommended graphic material: 200 micron Duratrans or equivalent
- Suitable for indoor use only

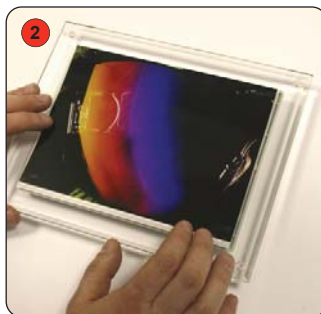
model	overall dimensions approx (mm)	graphic size approx (mm)	visible size approx (mm)	weight (approx)
ML926 (B6)	190 (h) x 235 (w) x 26 (d) (100mm deep inc legs) 7.5" (h) x 9.3" (w) x 1" (d) (4" deep inc legs)	145 (h) x 190 (w) 5.7" (h) x 7.5" (w)	132 (h) x 177 (w) 5.2" (h) x 7.0" (w)	0.9 kg (2lbs)
ML925 (B4)	276 (h) x 330 (w) x 28 (d) (100mm deep inc legs) 10.9" (h) x 13.0" (w) x 1.1" (d) (4" deep inc legs)	210 (h) x 260 (w) 8.3" (h) x 10.3" (w)	197 (h) x 247 (w) 7.8" (h) x 9.8" (w)	1.4 kg (3.1lbs)
ML924 (A4)	290 (h) x 378 (w) x 28 (d) (100mm deep inc legs) 11.4" (h) x 14.9" (w) x 1.1" (d) (4" deep inc legs)	215 (h) x 315 (w) 8.5" (h) x 12.4" (w)	197 (h) x 284 (w) 7.8" (h) x 11.2" (w)	1.6kg (3.5lbs)
ML922 (B2)	590 (h) x 450 (w) x 32 (d) 23.2" (h) x 17.7" (w) x 12.6" (d)	490 (h) x 350 (w) 19.3" (h) x 13.8" (w)	467 (h) x 327 (w) 18.4" (h) x 12.9" (w)	3.5kg (7.7lbs)

Assembly Instructions

Desktop assembly



1 Unfasten the four chrome fasteners and open up the lightbox.



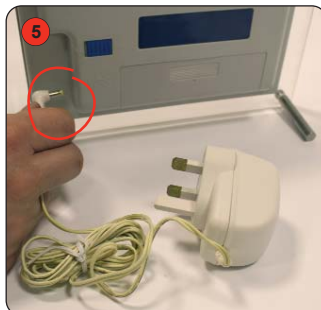
2 Position the graphic centrally onto the rear acrylic sheet.



3 Cover the graphic with the front acrylic sheet.

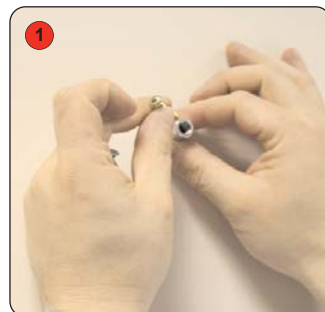


4 Fasten the acrylic sheets together using the chrome fasteners.

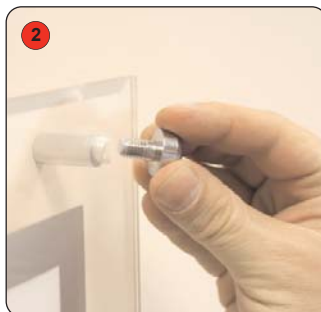


5 Attach the power supply adaptor to the lightbox and switch on ready for use.

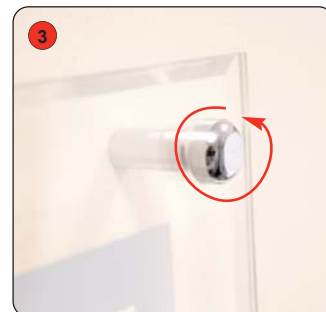
Wall mountable assembly



1 Fasten the chrome fastener standoff section to the wall. (Wall fixings not supplied).



2 Sandwich the graphic between the front and rear acrylic sheets and align against the chrome fasteners.



3 Secure using the four chrome mounting screws.

Other products in our Reflecta range include:



Reflecta D

A high impact lightbox display solution, simply add your own graphics. Spring loaded mechanism for easy change of graphics. Wall fixing, portrait or landscape



Reflecta Pod

A range of graphic pods and lightboxes, perfect for demonstration units or for instore displays and exhibitions.



Reflecta Lite

Reflecta Lite is a freestanding double sided lightbox. Elegant looks and ease of assembly make the Reflecta Lite ideal for Retail or Display use.